

Port of New Orleans Deepening
Feasibility Study

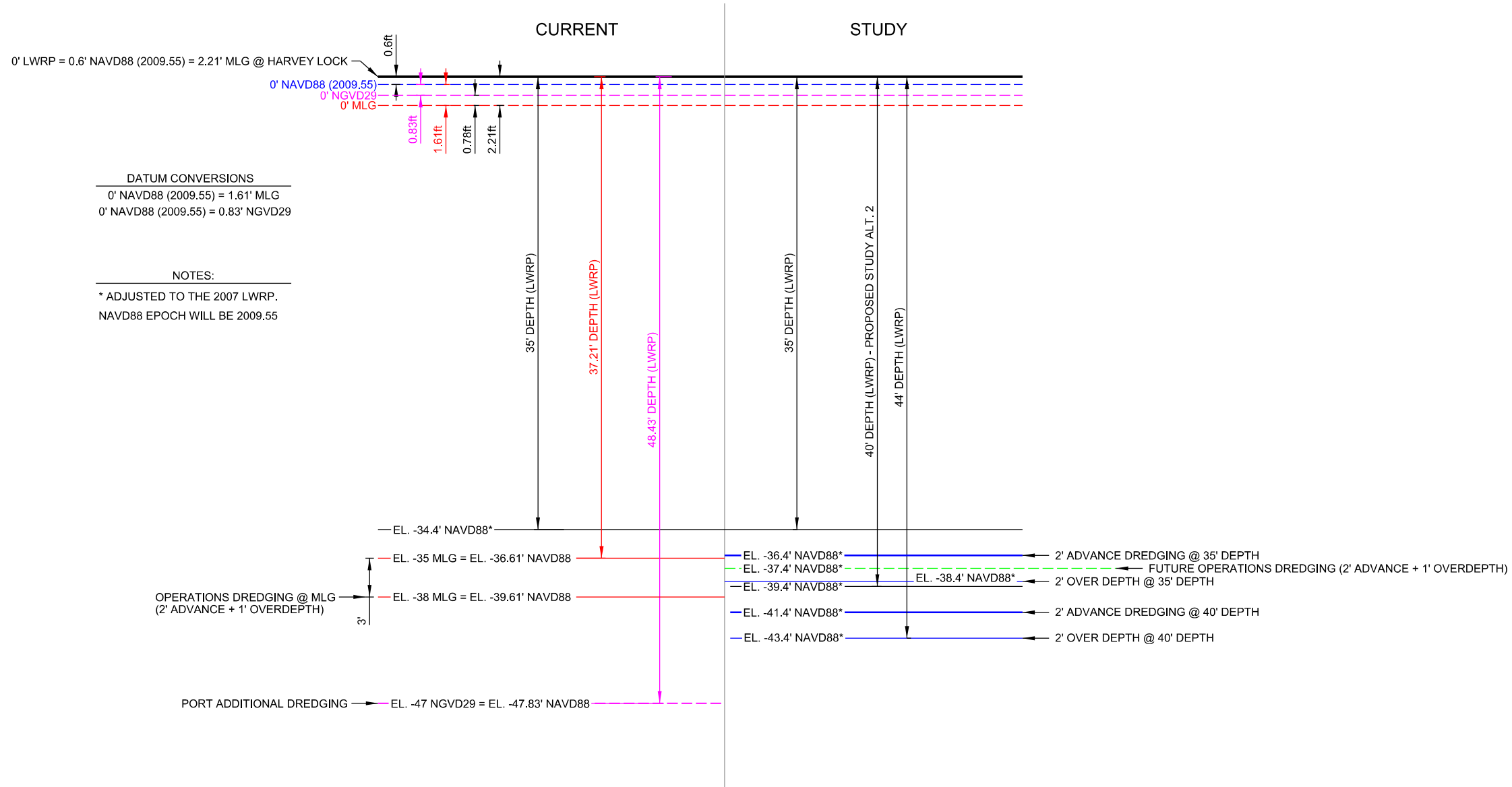
Appendix A: Engineering

Annex 2

Alternative 2: 40 ft Depth Drawings

March 2020

NEW ORLEANS HARBOR I



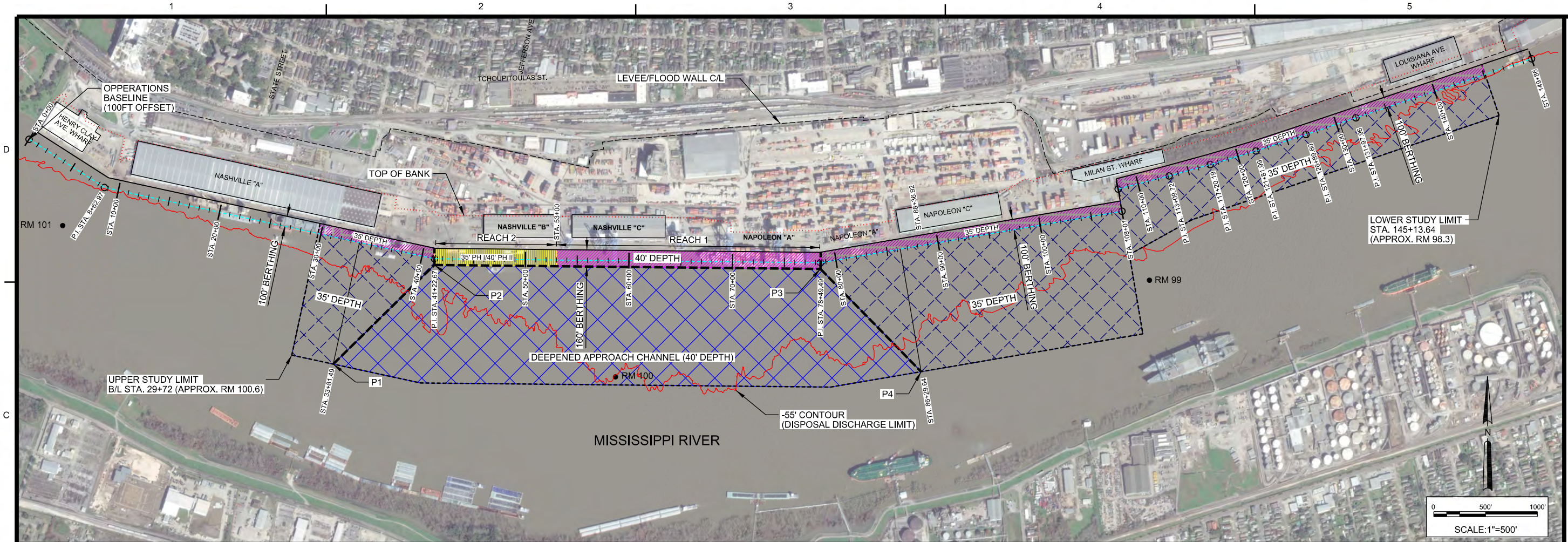
DATE	DESCRIPTION	MARK	DATE	DESCRIPTION	MARK

DESIGNED BY: MARGARET GREY	DATE:
DRAWN BY: JAG	SOLICITATION NO.:
CHECKED BY: P.S.	CONTRACT NO.:
APPROVED BY: P.S.	FILE NUMBER:
DATE:	FILE NAME:
SCALE:	ANSI:
DATE:	FILE NAME:
SCALE:	ANSI:

U.S. ARMY CORPS OF ENGINEERS
NEW ORLEANS DISTRICT
NEW ORLEANS, LOUISIANA

PORT OF NEW ORLEANS (PONO),
DEEPENING FEASIBILITY STUDY,
NEW ORLEANS PARISH, LA.
ALTERNATIVE 2
DATUM RELATIONSHIPS

SHEET IDENTIFICATION
G-03



 US Army Corps of Engineers NEW ORLEANS DISTRICT	
DATE	APPROVAL
DESCRIPTION	MARK
DATE	APPROVAL
DESCRIPTION	MARK

BASELINE - 100' OFFSET		
STA.	EASTING	NORTHING
0+00	X 3661654.256	Y 516579.333
8+62.97	X 3662381.101	Y 516114.130
41+22.67	X 3665571.115	Y 515427.099
78+49.49	X 3669294.205	Y 515388.646
108+01	X 3672203.202	Y 515884.880
108+01	X 3672166.029	Y 516099.199
113+09.72	X 3672659.247	Y 516225.828
117+20.19	X 3673055.002	Y 516334.747
121+81.99	X 3673497.520	Y 516466.793
126+89.60	X 3673979.732	Y 516625.341
131+97.96	X 3674461.933	Y 516786.332
149+86.20	X 3676156.841	Y 517356.489

STUDY LIMITS		
STA.	EASTING	NORTHING
29+72	X 3664442.760	Y 515669.643
145+13.64	X 3675708.941	Y 517205.818

DEEPENED APPROACH CHANNEL LIMITS		
45° ANGLE	STA.	ACTUAL POINT COORDINATE
UPSTREAM APPROACH	41+22.67	P1: X 3664590.309 Y 514410.259
	41+22.67	P2: X 3665566.962 Y 515367.138
DOWNSTREAM APPROACH	78+49.49	P3: X 3669293.585 Y 515328.649
	145+13.64	P4: X 3670265.037 Y 514336.922

SHEET LEGEND

- - - - - AUTHORIZED STUDY LIMITS
- - - - - OPERATION'S BASELINE, 100FT OFFSET FROM FACE OF WHARF
- - - - - DEEPENED APPROACH CHANNEL LIMITS
- - - - - TOP OF BANK (APPROXIMATE)
- - - - - LEVEE/FLOOD WALL C/L

- USACE - APPROACH CHANNEL (DEEPENED TO 40' DEPTH)
- USACE - APPROACH CHANNEL (REMAINING STUDY LIMITS, 35' DEPTH)
- PONO - 160' WIDE BERTHING AREA REACH 1 (40' DEPTH PHASE I)
- PONO - 160' WIDE BERTHING AREA REACH 2 (35' DEPTH PHASE I - 40' DEPTH PHASE II)
- PONO- 100' WIDE BERTHING (REMAINING STUDY LIMITS, 35' DEPTH)

- BASELINE PI.
- RIVER MILE (RM)

ALTERNATIVE 2 - 40' DEEPENED APPROACH CHANNEL/35' DEPTH			
	LIMITS	USACE APPROACH CHANNEL	PORT BERTHING AREA
PHASE I	DEEPENED APPROACH CHANNEL LIMITS	40' DEPTH BELOW LWRP	40' DEPTH BELOW LWRP (REACH 1) 35' DEPTH BELOW LWRP (REACH 2)
	REMAINING STUDY LIMITS	35' DEPTH BELOW LWRP	35' DEPTH BELOW LWRP
PHASE II	DEEPENED APPROACH CHANNEL LIMITS	SAME AS PHASE I	40' DEPTH BELOW LWRP (REACH 2)
	REMAINING STUDY LIMITS	SAME AS PHASE I	SAME AS PHASE I

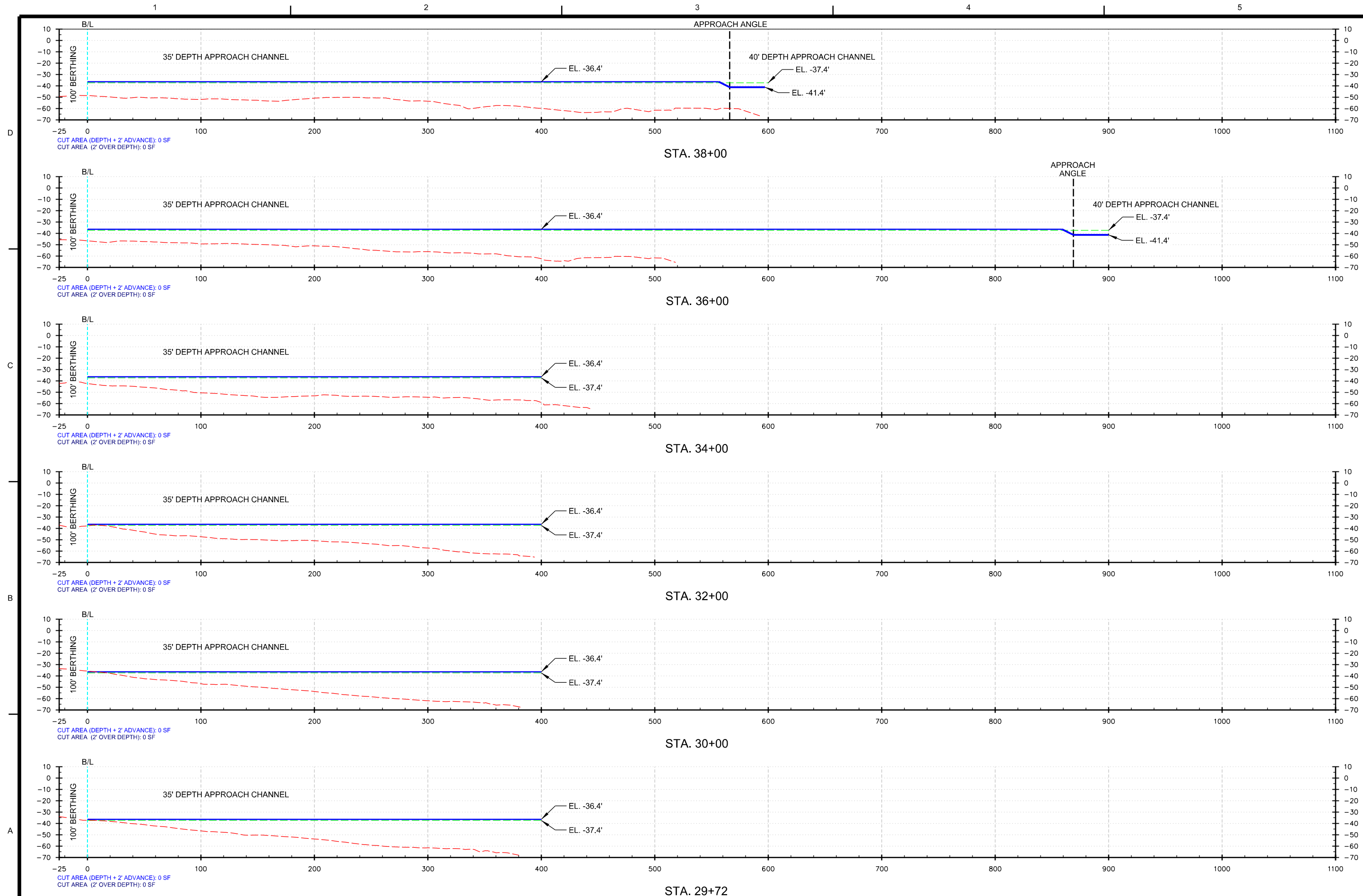
NOTES

ADVANCE DREDGING: ADDITIONAL 2' DEPTH.
 OVER DEPTH: ADDITIONAL 2' DEPTH.
 VERTICAL DATUM: NAVD88 (2009.55)
 DEPTH CONTROL: LOW WATER REFERENCE PLANE (LWRP)
 PHASE I TO PHASE II DURATION: ASSUME 5 YEARS
 PORT BERTHING CHANGE: 100' TO 160' WIDE BETWEEN STA. 41+22.67 TO STA. 78+49.49

DESIGNED BY: JAV	DATE: 01-10-2020
DRAWN BY: JAV	SOLICITATION NO.:
CHECKED BY: JAV	CONTRACT NO.:
APPROVED BY: JAV	FILE NUMBER:
U.S. ARMY CORPS OF ENGINEERS NEW ORLEANS DISTRICT NEW ORLEANS, LOUISIANA	U.S. ARMY CORPS OF ENGINEERS NEW ORLEANS DISTRICT NEW ORLEANS, LOUISIANA

PORT OF NEW ORLEANS (PONO)
 DEEPENING FEASIBILITY STUDY,
 NEW ORLEANS PARISH, LA.
 ALTERNATIVE 2
 OVERALL PLAN

SHEET IDENTIFICATION
C-01



DATE	APPR	MARK	DESCRIPTION

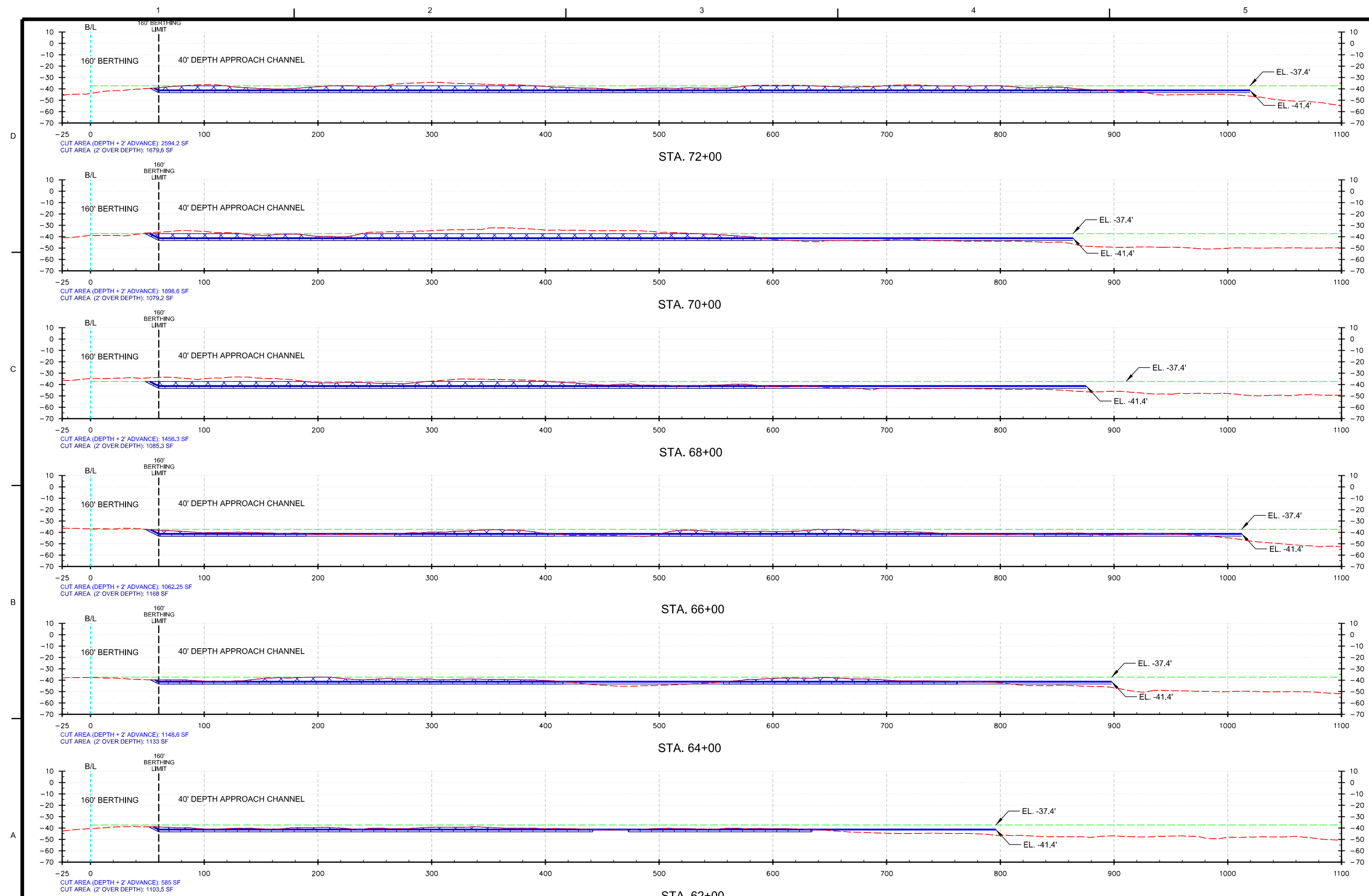
DESIGNED BY: MARGARET GREY	DATE:	SOLICITATION NO.:
DRAWN BY: P.F.S.	ISSUED BY: J.A.G.	CONTRACT NO.:
APPROVED BY: P.F.S.	DATE:	FILE NUMBER:
PROJECT NO.:	DATE:	FILE NAME:

PORT OF NEW ORLEANS (PONO),
DEEPENING FEASIBILITY STUDY,
NEW ORLEANS PARISH, LA.
ALTERNATIVE 2
USACE APPROACH CHANNEL,
CROSS SECTIONS,
STA. 29+72 TO STA. 38+00

SHEET IDENTIFICATION
C-03



STA. 29+72
SHEET LEGEND

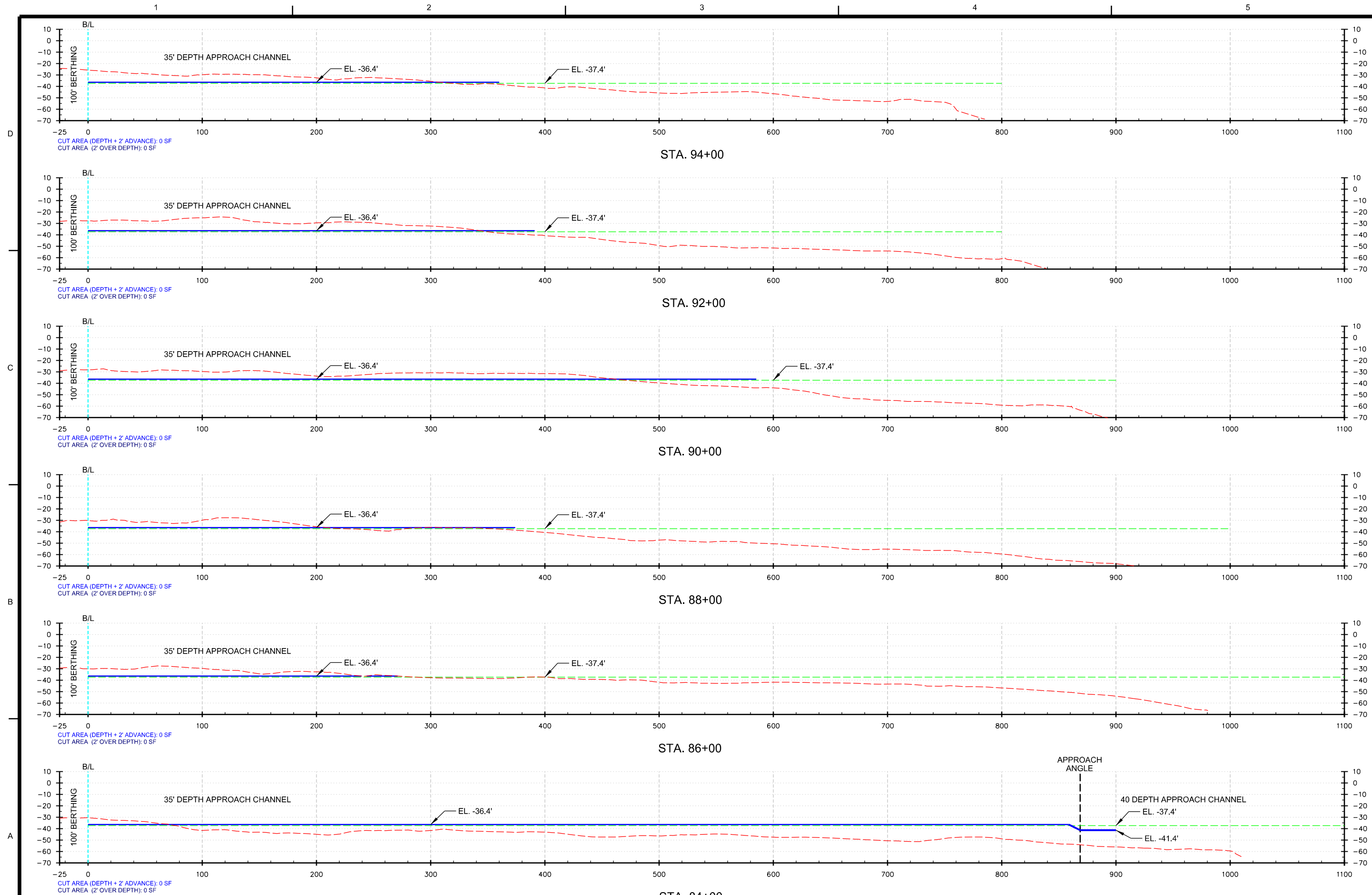


DATE	DESCRIPTION	APPROVAL

DESIGNED BY: PENGAR, BERRY	DATE:	SOLICITATION NO.:
DRAWN BY: P.F.S.		
CHECKED BY: J.A.B.		
APPROVED BY: P.F.S.		

PORT OF NEW ORLEANS (PONO),
DEEPENING FEASIBILITY STUDY,
NEW ORLEANS PARISH, LA.
ALTERNATIVE 2
USACE APPROACH CHANNEL,
CROSS SECTIONS
STA. 62+00 TO STA. 72+00





STA. 84+00
SHEET LEGEND

- EXISTING GRADE (06 AUG 2019 NAVD88)
- PROPOSED DEPTH + 2' ADVANCE (EL. -36.4' NAVD88/EL. -41.4' NAVD88)
- OPERATIONS MAINTENANCE GRADE (EL. -37.4' NAVD88)
- 2' OVER DEPTH (EL. -38.4' NAVD88/EL. -43.4' NAVD88)
- XXXXXX PROPOSED DEPTH CUT + 2' ADVANCE CUT (EL. -36.4' NAVD88/EL. -41.4' NAVD88)
- XXXXXX 2' OVER DEPTH CUT (EL. -38.4' NAVD88/EL. -43.4' NAVD88)

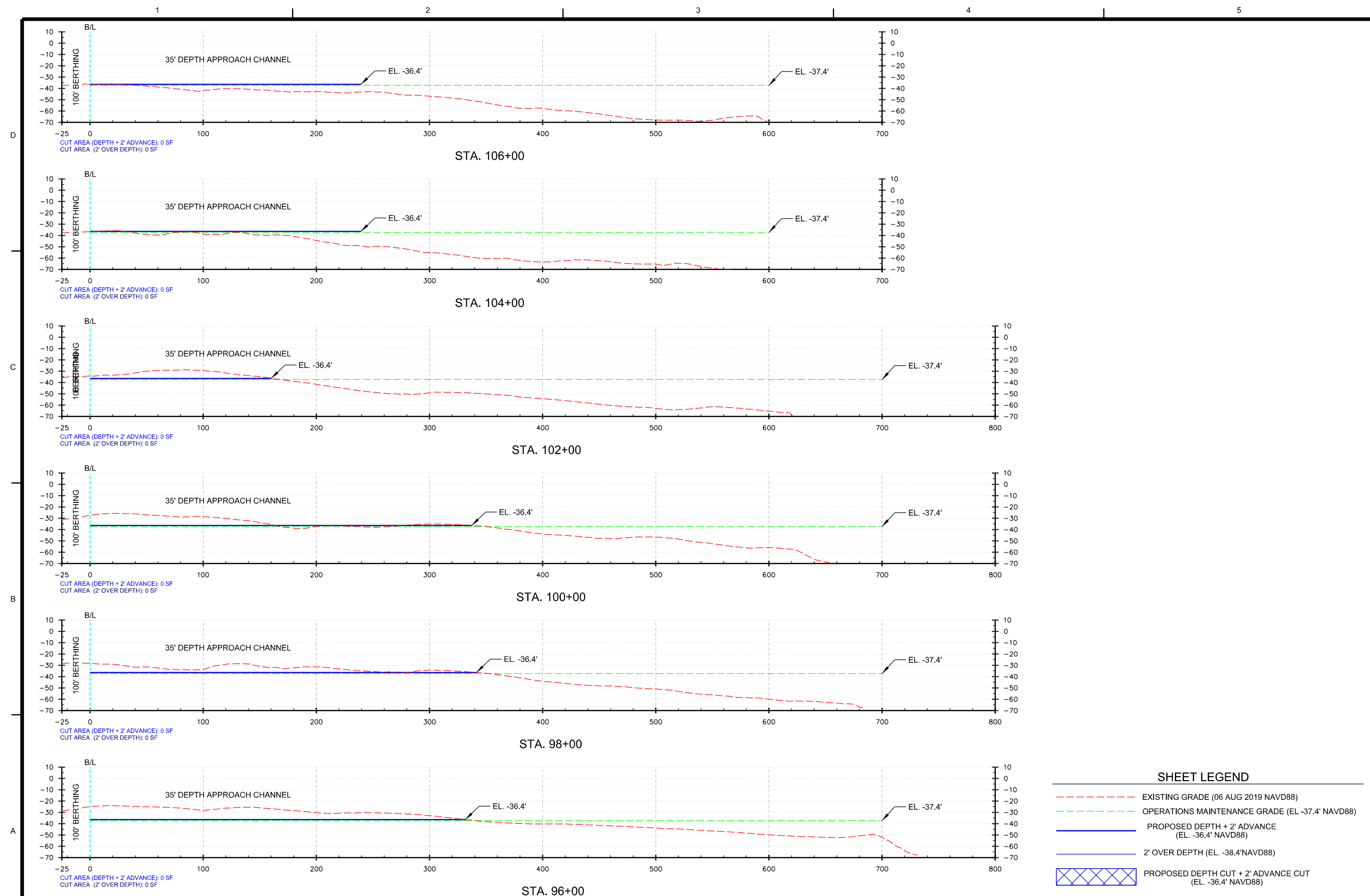


DESIGNED BY	DATE	APPROVED BY	DATE
FORWARDED BY	SUBMITTED BY	APPROVED BY	DATE
PROJECT NO.	FILE NUMBER	DESCRIPTION	MARK
CONTRACT NO.	FILE NUMBER	DESCRIPTION	MARK

DESIGNED BY	DATE	APPROVED BY	DATE
FORWARDED BY	SUBMITTED BY	APPROVED BY	DATE
PROJECT NO.	FILE NUMBER	DESCRIPTION	MARK
CONTRACT NO.	FILE NUMBER	DESCRIPTION	MARK

PORT OF NEW ORLEANS (PONO)
DEEPENING FEASIBILITY STUDY,
NEW ORLEANS PARISH, LA.
ALTERNATIVE 2
USACE APPROACH CHANNEL,
CROSS SECTIONS
STA. 84+00 TO STA. 94+00

SHEET IDENTIFICATION
C-08



DATE	APPR	MARK	DESCRIPTION

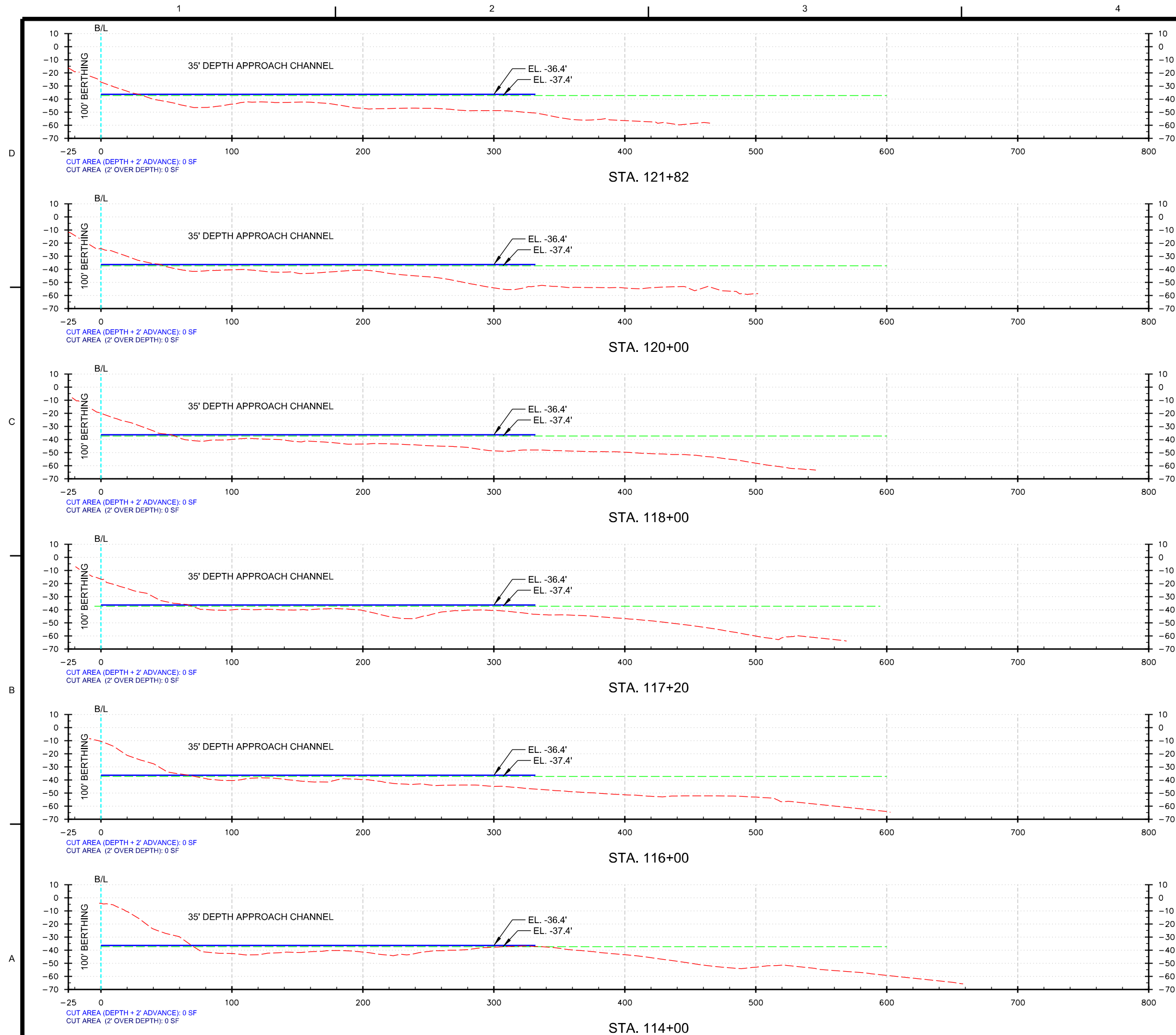
DESIGNED BY: DANIEL BERRY	DATE:	SOLICITATION NO.:
DRAWN BY: P.F.S.	ISSUED BY: J.A.B.	CONTRACT NO.:
PREPARED BY: P.F.S.	SUBMITTED BY: P.F.S.	FILE NUMBER:
SCALE:	PLOT DATE:	FILE NAME:
482.1	01-10-2020	

PORT OF NEW ORLEANS (PONO),
DEEPENING FEASIBILITY STUDY,
NEW ORLEANS PARISH, LA.
ALTERNATIVE 2
USACE APPROACH CHANNEL,
CROSS SECTIONS
STA. 96+00 TO STA. 106+00

SHEET
IDENTIFICATION
C-09

SHEET LEGEND

	EXISTING GRADE (06 AUG 2019 NAVD88)
	OPERATIONS MAINTENANCE GRADE (EL -37.4' NAVD88)
	PROPOSED DEPTH + 2' ADVANCE (EL. -36.4' NAVD88)
	2' OVER DEPTH (EL. -38.4' NAVD88)
	PROPOSED DEPTH CUT + 2' ADVANCE CUT (EL. -36.4' NAVD88)
	2' OVER DEPTH CUT (EL. -38.4' NAVD88)



SHEET LEGEND

- EXISTING GRADE (06 AUG 2019 NAVD88)
- OPERATIONS MAINTENANCE GRADE (EL. -37.4' NAVD88)
- PROPOSED DEPTH + 2' ADVANCE (EL. -36.4' NAVD88)
- 2' OVER DEPTH (EL. -38.4' NAVD88)
- X X X X PROPOSED DEPTH CUT + 2' ADVANCE CUT (EL. -36.4' NAVD88)
- 2' OVER DEPTH CUT (EL. -38.4' NAVD88)

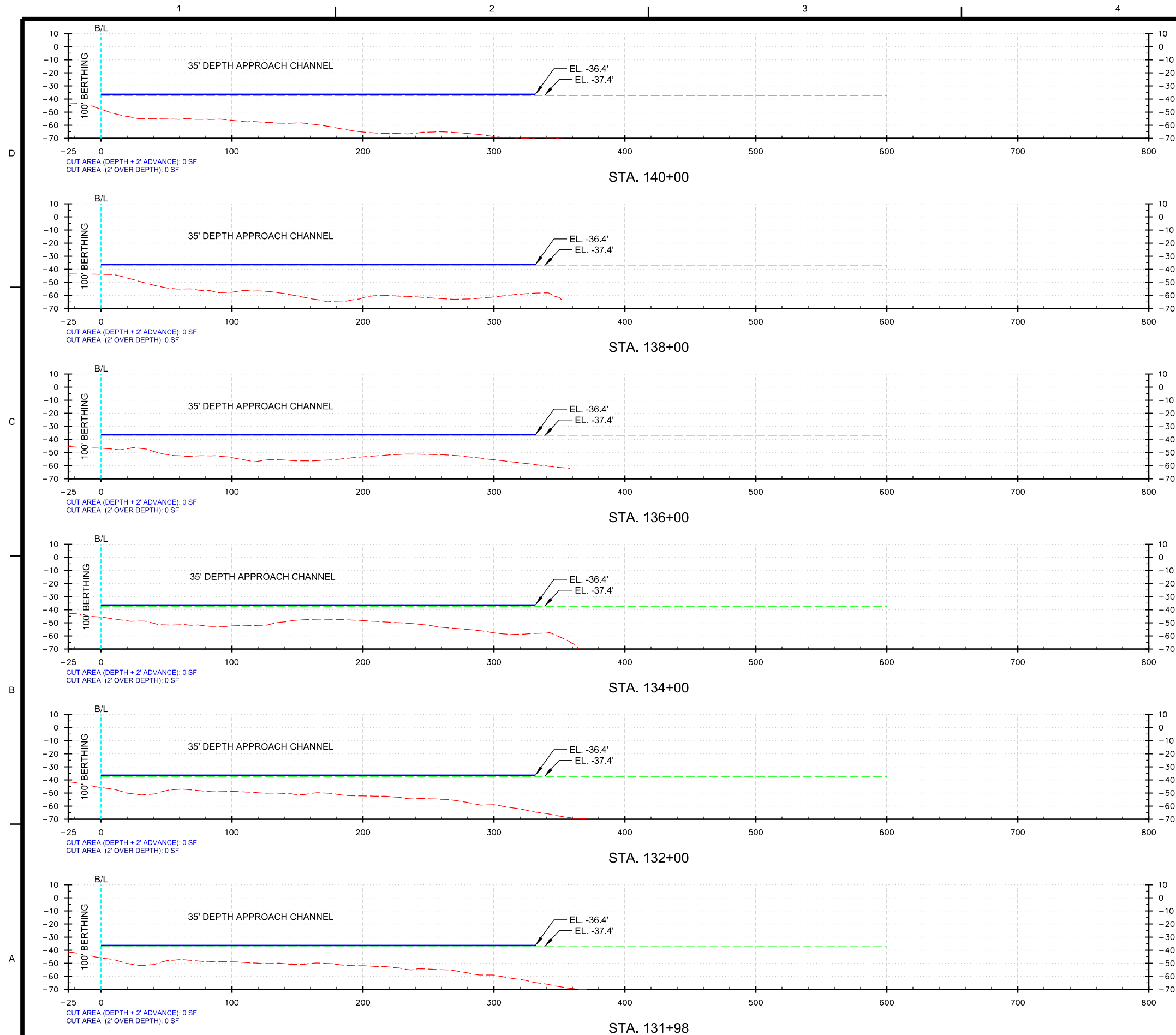


DATE	APPR	MARK	DESCRIPTION

DESIGNED BY: P. G. GARY	DATE:	SOLICITATION NO.:
DRAWN BY: J. A. G.	DATE:	CONTRACT NO.:
CHECKED BY: J. A. G.	DATE:	FILE NUMBER:
APPROVED BY: J. A. G.	DATE:	FILE NAME:
PROJECT NO.:	DATE:	FILE NAME:
PROJECT NAME:	DATE:	FILE NAME:

PORT OF NEW ORLEANS (PONO)
DEEPENING FEASIBILITY STUDY,
NEW ORLEANS PARISH, LA.
ALTERNATIVE 2
USACE APPROACH CHANNEL,
CROSS SECTIONS
STA. 114+00 TO STA. 121+82

SHEET IDENTIFICATION
C-11



SHEET LEGEND

	EXISTING GRADE (06 AUG 2019 NAVD88)
	OPERATIONS MAINTENANCE GRADE (EL. -37.4' NAVD88)
	PROPOSED DEPTH + 2' ADVANCE (EL. -36.4' NAVD88)
	2' OVER DEPTH (EL. -38.4' NAVD88)
	PROPOSED DEPTH CUT + 2' ADVANCE CUT (EL. -36.4' NAVD88)
	2' OVER DEPTH CUT (EL. -38.4' NAVD88)



DESIGNED BY:	DATE:
DRAWN BY:	SOLICITATION NO.:
CHECKED BY:	CONTRACT NO.:
IN CHARGE:	FILE NUMBER:
PROJECT NO.:	DATE:
DESCRIPTION:	MARK:

DESIGNED BY:	DATE:
DRAWN BY:	SOLICITATION NO.:
CHECKED BY:	CONTRACT NO.:
IN CHARGE:	FILE NUMBER:
PROJECT NO.:	DATE:
DESCRIPTION:	MARK:

PORT OF NEW ORLEANS (PONO),
 DEEPENING FEASIBILITY STUDY,
 NEW ORLEANS PARISH, LA.
 ALTERNATIVE 2
 USACE APPROACH CHANNEL,
 CROSS SECTIONS
 STA. 131+98 TO STA. 140+00

SHEET IDENTIFICATION
C-13

